

Fact sheet

Faculty of Management and IT Exchange program Business for Exchange Academic Year 2022-2023

INSTITUTIONAL INFORMATION

Name	Karel de Grote University of Applied Sciences and Arts
Erasmus code	B ANTWERP59
Faculty	Management and IT (before: Business Management)
Address	Nationalestraat 5, 2000 Antwerpen, BELGIUM
Website	https://www.kdg.be/en/business-4-exchange



INTERNATIONAL OFFICE - STAFF DETAILS



Sven Jacobs

International
Coordinator

+32 3 613 17 16
sven.jacobs@kdg.be



Marijke Jansen

Student Exchange
Coordinator
Incoming students
(B4E: Business 4 Exchange)

+32 3 613 16 82
B4E@kdg.be



Valérie Veridique

Student Exchange
Coordinator
Outgoing students
for study

+32 3 613 18 11
studyabroad.mit@kdg.be



Sofie Speltincx

Student Exchange
Coordinator
Outgoing students for study
and international internships

+32 3 613 16 80
studyabroad.mit@kdg.be
internships.mit@kdg.be



Koen Van Beylen

Student Exchange
Coordinator
International internships

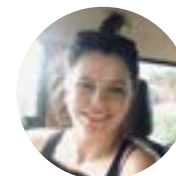
+32 3 613 16 83
internships.mit@kdg.be



Horiya El Fakeh

International Officer
Administrative support for
incoming exchange students

+32 3 613 16 04
horiya.elfakeh@kdg.be



Elien Vanstappen

International Officer
Incoming and outgoing staff mobility

+32 3 613 13 18
elien.vanstappen@kdg.be

APPLICATION INFORMATION

What to expect?

Knowledge, know-how and skills presented by (inter)national lecturers and/or business wizards, especially designed for students in the field of Business Management.

You can choose between 2 tracks:

- **Marketing and Management**
- **International Business and Logistics**

Nomination deadlines

For autumn: May 1st
For spring: November 1st

Academic calendar

	AUTUMN (T1+T2)	SPRING (T3+T4)
Orientation days	14-16 September	26-27 January
B4E-modules period 1 or 3	19 Sept - 28 Oct	6 Feb-24 March
Deadline changes to LA	7 October	17 February
Half term holidays (1 week)	31 Oct - 6 Nov	20-26 February
Examinations	7-11 November	27-31 March
B4E-modules term 2 or 4	14 Nov - 23 Dec	17 April – 26 May
Seasonal holidays (2 weeks)	26 Dec - 8 Jan	3-16 April
Examinations	9-27 January	5-23 June
End of semester	27 January	23 June

English language requirements

Level B2 is strongly recommended

Grading scale

A	Excellent	18/19/20
B	Very good	16/17
C	Good	14/15
D	Satisfactory	12/13
E	Sufficient	10/11
FX	Tolerable failure	9
F	Failure	6
NA	Not attended	

Contact

Marijke Jansen: B4E@kdg.be

GENERAL INFORMATION

- [Accommodation](#)
- [Insurance](#)
- [City registration](#)
- [Welcoming days](#)
- [COVID-19 FAQs](#)